



## Kenya Power

**Central Office** – P.O. Box 30099, Nairobi, Kenya  
Telephone – 254-02-3201000  
Fax No. 254-02-3514485  
StimaPlaza, Kolobot Road  
Nairobi, Kenya

Our ref: - KP1/9A.3/OT/54/23-24/Add1/HO/mb

13<sup>th</sup> June, 2024

**Your ref:**

TO: ALL PROSPECTIVE BIDDERS

**RE: ADDENDUM NO. 1 TO THE TENDER NO. KP1/9A.3/OT/54/23-24 FOR SUPPLY OF GALVANIZED STEEL STRUCTURES FOR IMPLEMENTATION OF PREMIUM CUSTOMERS SCHEMES AND FOR VARIOUS PRIMARY AND SECONDARY SUBSTATIONS.**

Please refer to the above Tender.

We make the following amendments to the Principal Tender Document (*hereinafter abbreviated as the PTD*)

**1. RELATIONSHIP WITH THE PRINCIPAL TENDER DOCUMENT**

Save where expressly amended by the terms of this Addendum, the Principle tender Document shall continue to be in full force and effect. The provisions of this addendum shall be deemed to have been incorporated in and shall be read and constructed as part of the Principle tender Document.

**2. CLARIFICATION**

The following responses are made to clarifications sought on various issues on the tender document.

Query No.	Clarification sought by Bidder	KPLC Response
1	Please provide drawings for item No.2/11/12.  Also, advise if type test reports for angular steel towers are acceptable for submission.	See attached <b>Appendix I to III</b>  Tenderer to submit test reports for individual steel angle sections, tubular sections, steel channels <b>but no type test for the angular towers</b> . The test reports are meant to guarantee quality of the steel used in the fabrication of steel structures.

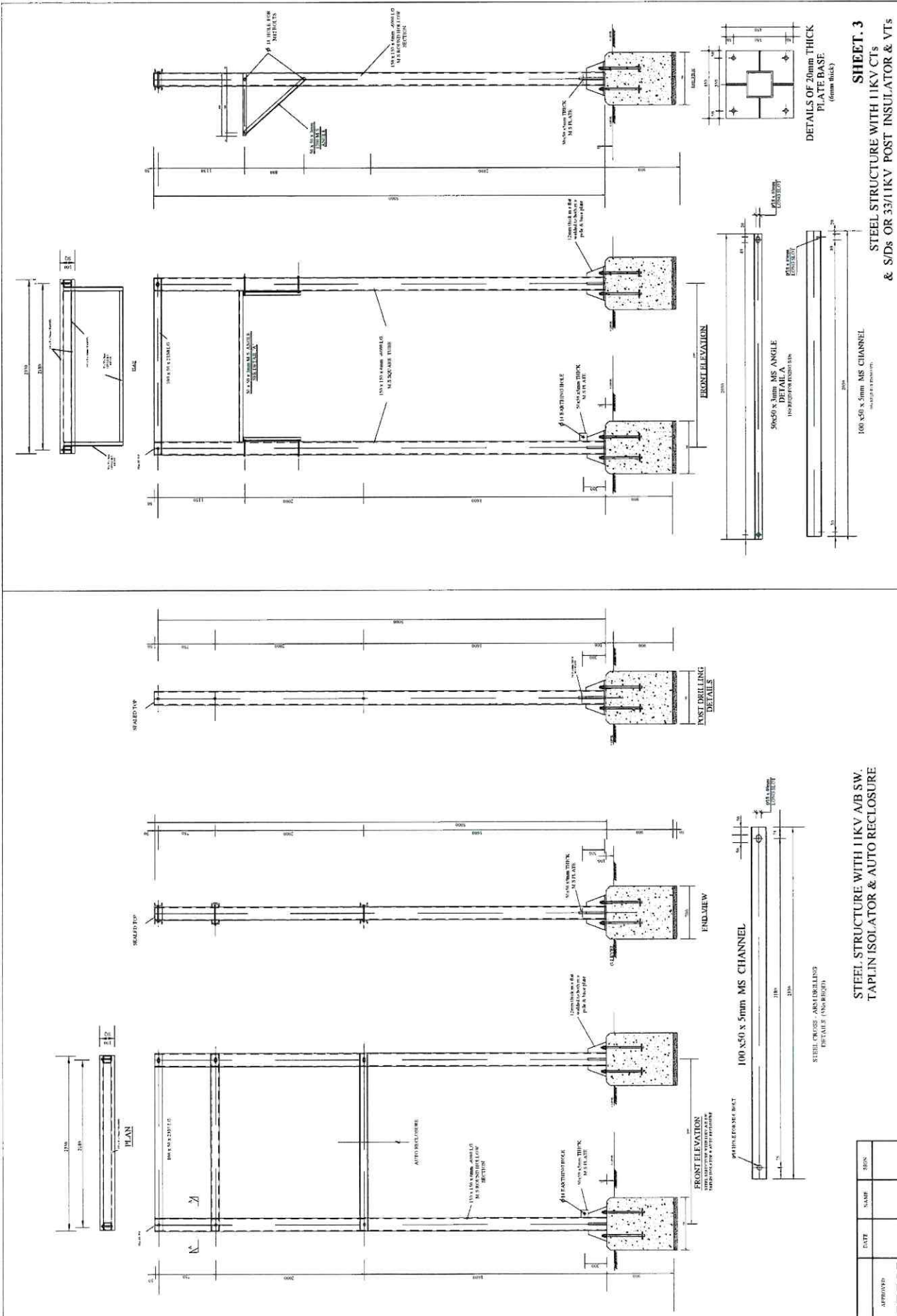
All other terms and condition remains as per the tender document.

Yours faithfully,

**FOR: THE KENYA POWER & LIGHTING COMPANY PLC**

**HAROUN OTIENO**

**AG. GENERAL MANAGER, SUPPLY CHAIN & LOGISTICS**



**SHEET. 3**  
**STEEL STRUCTURE WITH 11KV CTs**  
**& S/Ds OR 33/11KV POST INSULATOR & VTs**

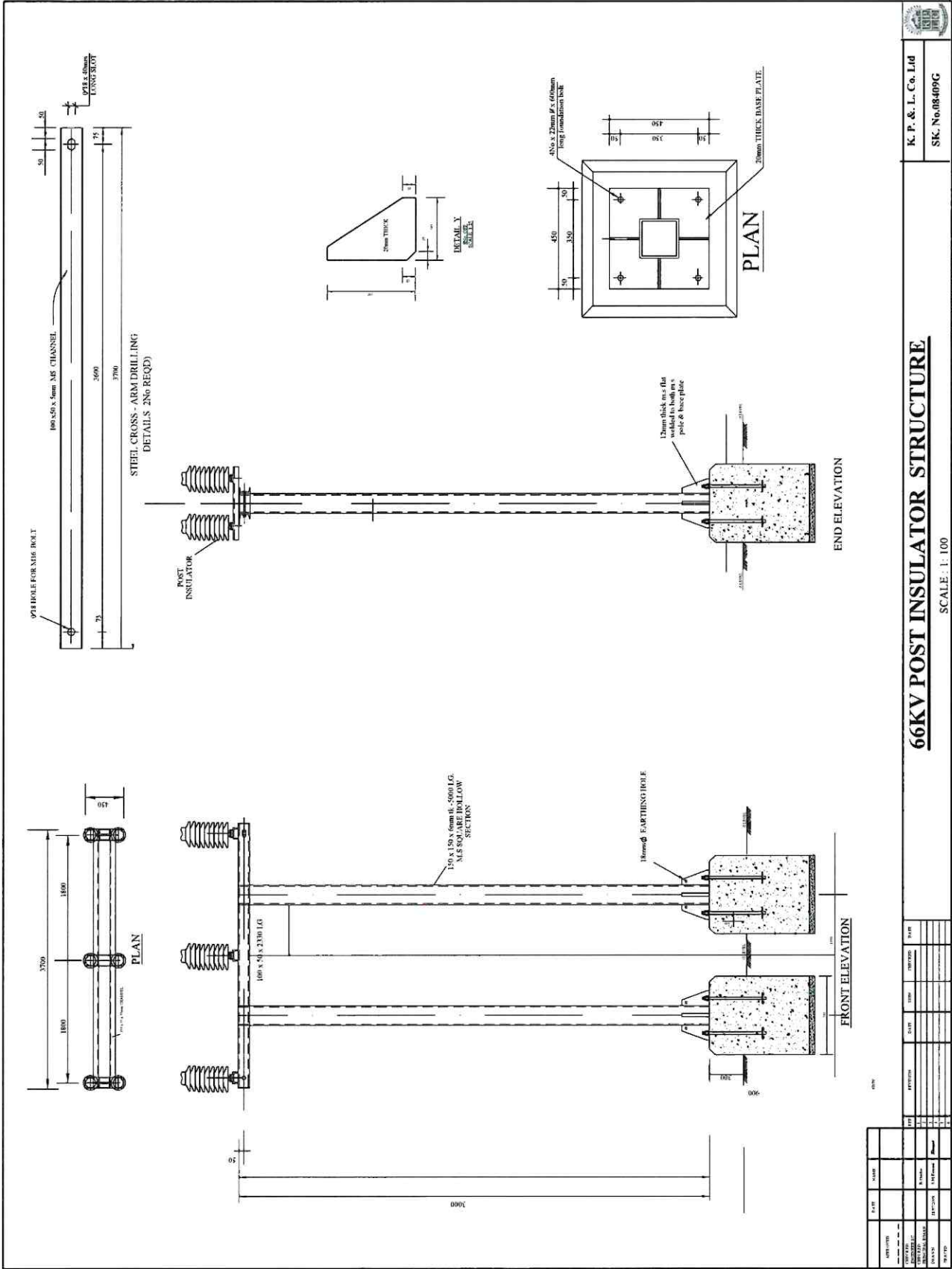
**STEEL STRUCTURE WITH 11KV A/B SW.**  
**TAPLIN ISOLATOR & AUTO RECLOSURE**

**K. P. & L. Co. Ltd**  
**SK. No.09769**

**DETAILS OF STEEL 'H' POLE STRUCTURES WITH A/B SW, T/ISOLATOR & AUTO RECLOSURE AND CTs + S/Ds OR POST INSULATOR + VTs (33/11)**  
**SCALE: 1:25**

DATE	NAME	DESIGN	DATE	NAME	CHECKED	DATE

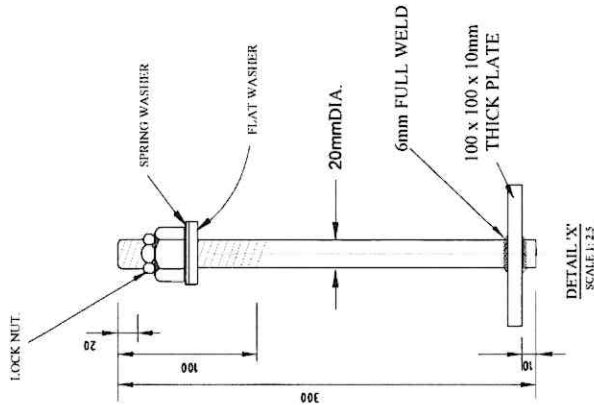
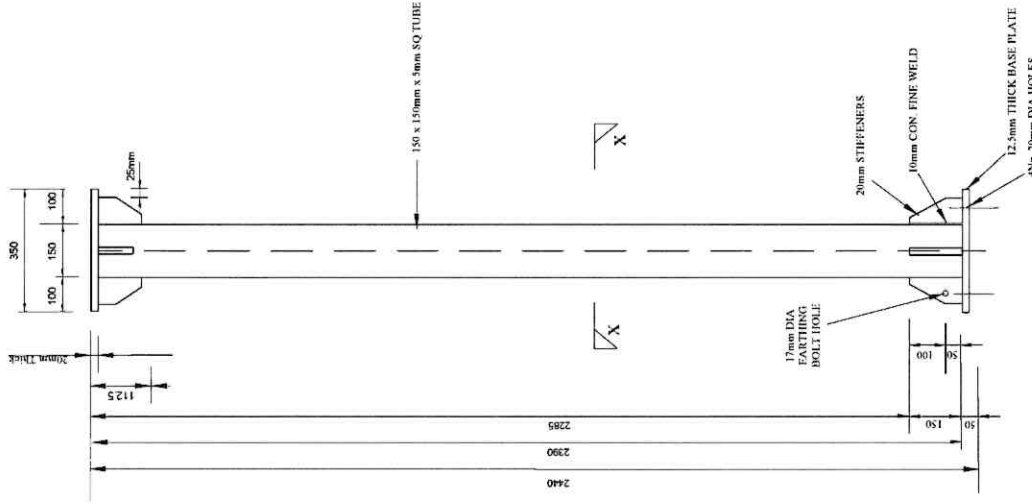
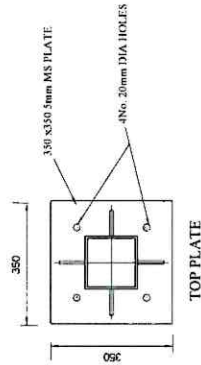
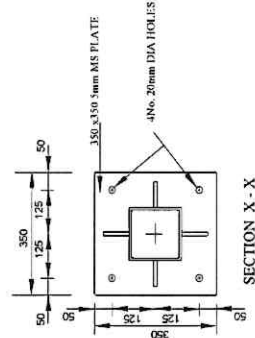
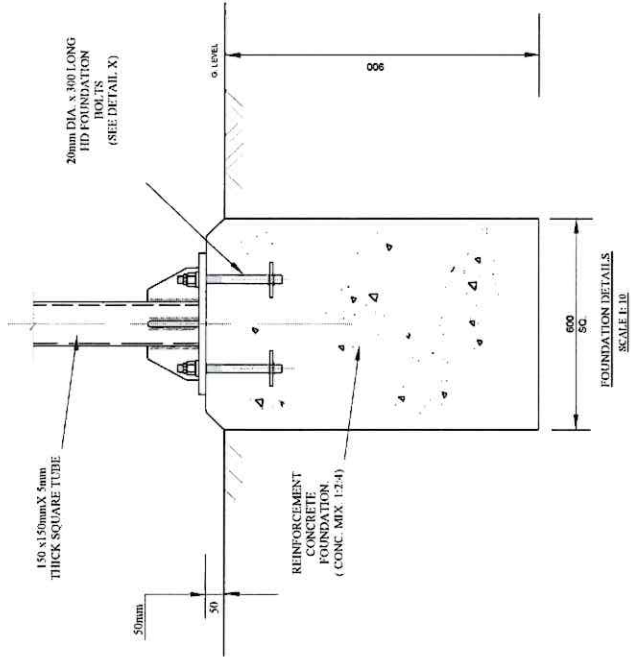
APPROVED: \_\_\_\_\_  
 PROJECT: \_\_\_\_\_  
 DRAWING NO: \_\_\_\_\_  
 SHEET NO: \_\_\_\_\_



K. P. & L. Co. Ltd  
SK. No. 08409G

66KV POST INSULATOR STRUCTURE

SCALE: 1:100



SHEET 3F

SIDE ELEVATION



K. P. & L. Co. Ltd

SK. No.08409

DETAILS OF 66KV SURGE DIVERTERS  
STRUCTURE - STEEL

SCALE 1:100

APPROVED	DATE	NAME	SIGN
CHECKED ENGINEER/JC			
CHECKED PRINCIPAL/DYMAN		H. Gantho	
DRAWN	21/07/2009	S. M. K. Imami	S. M. K. Imami
TRACED			

REF	REVISION	DATE	SIGN	CHECKED	DATE
1					
2					
3					
4					
5					
6					