

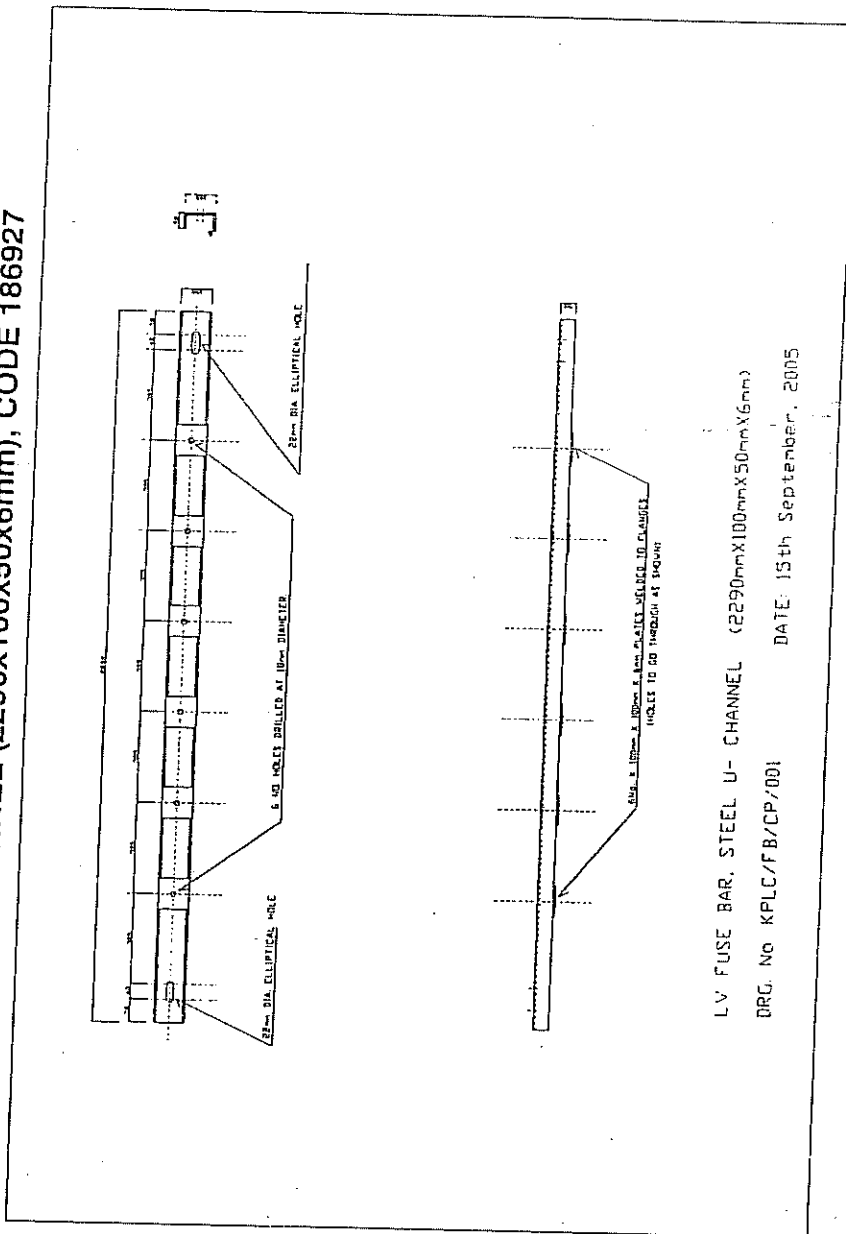
The Kenya Power & Lighting
Co. Ltd.

TITLE:

**SPECIFICATION FOR STEEL
STRUCTURES FOR OVERHEAD
LINES**

Doc. No.	KPLC1/3CB/TS/03
Issue No.	1
Revision No.	1
Date of Issue	2007-04-12
Page	25 of 27

FIG. 14: LV FUSE BAR U-CHANNEL (2290x100x50x6mm), CODE 186927



Issued by: Margaret Kanini; for R&D Manager

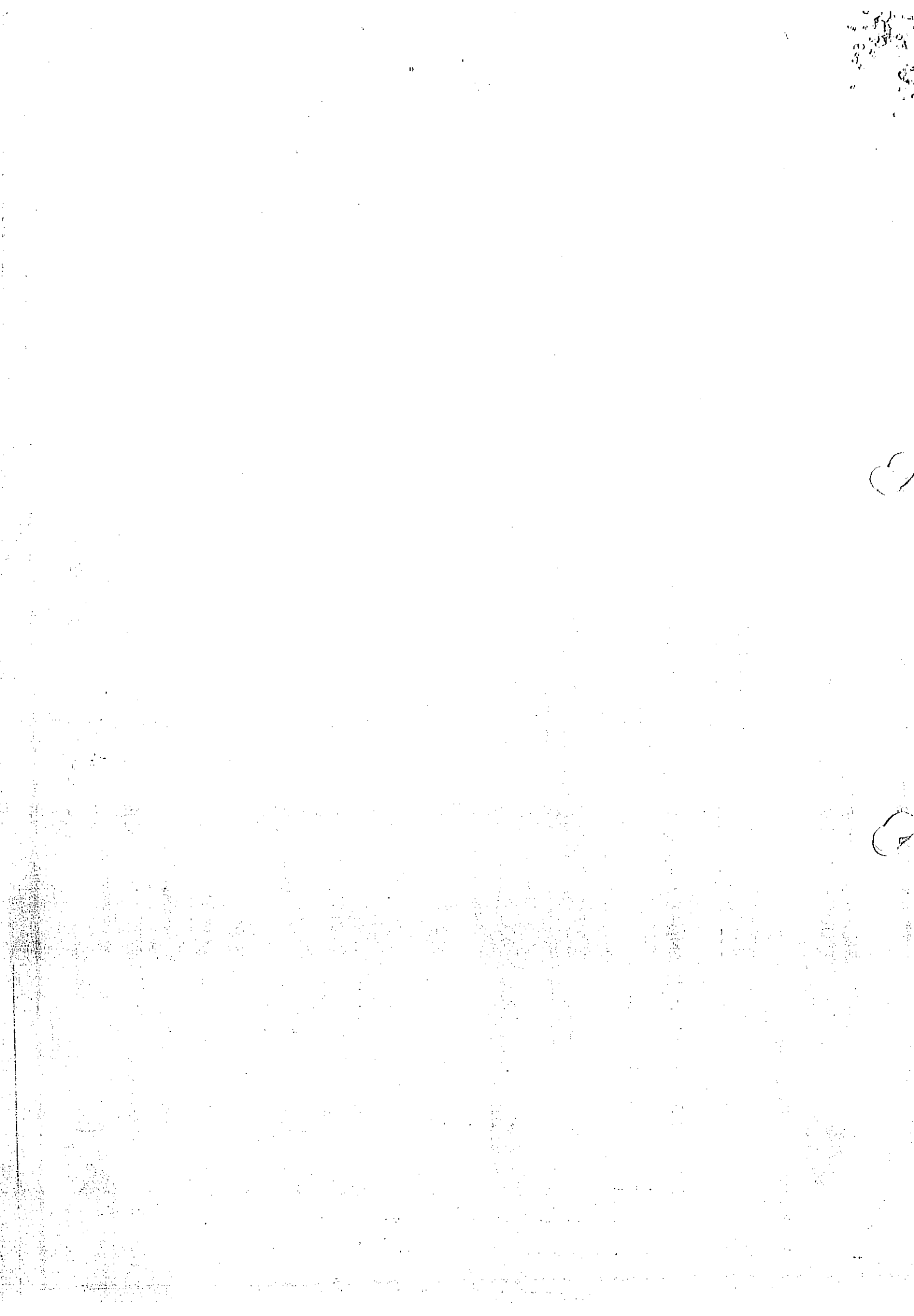
Signed:

Date: 2007-04-12

Authorized by: David Mwangi, Chief Manager, PR&PM

Signed:

Date: 2007-04-12

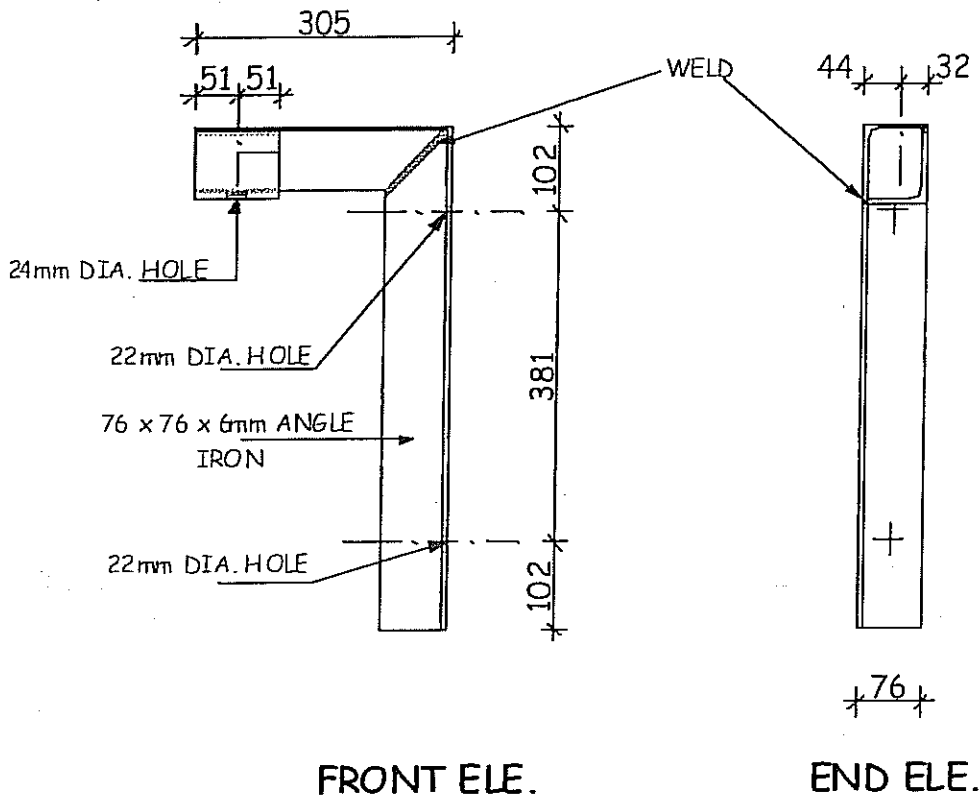




The Kenya Power & Lighting
Co. Ltd.

TITLE:
**SPECIFICATION FOR STEEL
STRUCTURES FOR OVERHEAD
LINES**

Doc. No.	KPLC1/3CB/TSP/03/003
Issue No.	1
Revision No.	1
Date of Issue	2007-04-12
Page 27 of 27	



TITLE

**FIG. 15: CODE181228 -
BRACKET TOP POLE 33KV DELTA CONS.**

CHECKED BY:

S. KIMITEI

Date:

10/Apr 1/07

DRAWN BY:

J. M.KAHARE

Date:

10/Apr 1/07

Issued by: Margaret Kanini; for R&D Manager

Authorized by: David Mwangi, Chief Manager, PR&PM

Signed:

Signed:

Date: 2007-04-12

Date: 2007-04-12

